

8/1



EXAMINATIONS COUNCIL OF ZAMBIA

GRADE 7 COMPOSITE EXAMINATION

Creative and Technology Studies

SPECIMEN PAPER FOR EXAMINATIONS STARTING IN 2016

SECTION A: EXPRESSIVE ARTS

1 The note shown below has ...



- A ½ beat
- B 1 beat
- C 2 beats
- D 3 beats

2 Which of the following is a gymnastic activity?

- A Forward roll
- B Hurdle jumping
- C Press ups
- D Relay race

3 Which of the following is **not** the best way to use the poster?

- A Advertising
- B Announcing an event
- C Decoration
- D Promoting sexual abuse

4 Dancing follows the song's ...

- A chorus.
- B pitch.
- C rhythm.
- D theme.

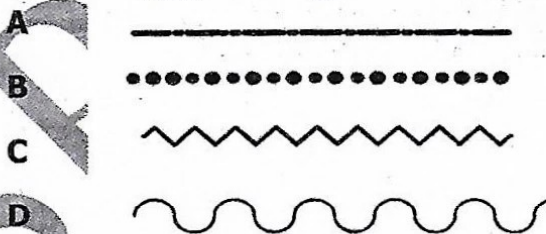
5 In gymnastics different pieces of equipment are used **except** ...

- A dumb bells.
- B horizontal bars.
- C parallel bars.
- D vaulting box.

6 Rhythm is the flow of music in time. It is mainly measured in ...

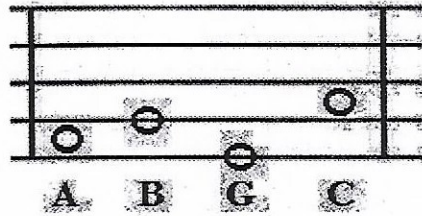
- A beats, melody and meter.
- B beats, meter and tempo.
- C harmony, meter and tempo.
- D melody, harmony and meter.

- 7** The two ways in which you can make a drawing are ...
- A** land scape and sideway.
 - B** land scape and portrait.
 - C** imaginative and still life.
 - D** portrait and sideway.
- 8** Which of the following will help a musician to raise money?
- A** Entertaining people at a show.
 - B** Practising how to play drums.
 - C** Singing during an initiation ceremony.
 - D** Using instruments at a funeral.
- 9** In the game of netball, the role of the goal attacker is to ...
- A** begin the game.
 - B** defend the ring.
 - C** protect the team.
 - D** score the goals.
- 10** Rules are applied in games to
- A** ensure fair play.
 - B** favour one team.
 - C** make the game interesting.
 - D** punish all players.
- 11** Which of the lines below can make a wavy pattern?



- 12** Gule Wamukulu (Nyau) is an African traditional dance usually performed by the ...
- A** Tongas of Southern Province.
 - B** Namwangas of Muchinga Province.
 - C** Lozis of Western Province.
 - D** Chewas of Eastern Province.

13 Which **one** of the clefs below makes the lettering of the staff correct?

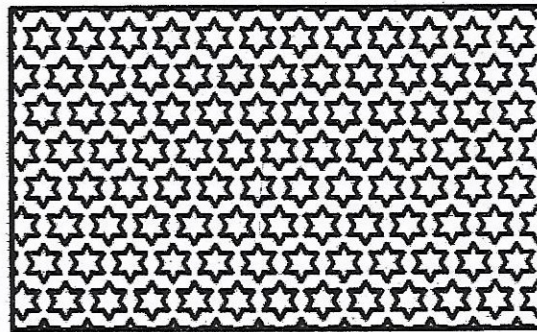


- A Bass clef
- B Treble clef
- C G clef
- D C clef

14 Which of the following is the best lifesaving skill in swimming?

- A Back stroke
- B Breast stroke
- C Free rescue
- D Reach rescue

15 The pattern in the diagram below can be used for ...



- A arrangement.
- B colouring.
- C decorating.
- D painting.

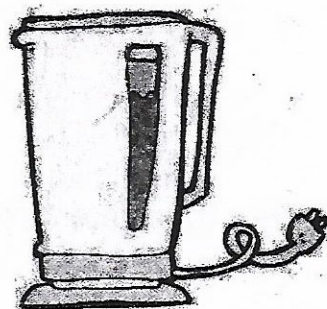
16 Which set of activities can be drawn to represent poverty reduction?

- A Beer drinking, smoking and farming.
- B Farming, carving and tailoring.
- C Smoking, carving and farming.
- D Tailoring, beer drinking and farming.

- 17** Masiye made a picture from small pieces of coloured materials. This is known as ...
- A** collage.
 - B** mosaic.
 - C** montage.
 - D** applique.
- 18** Apart from entertainment music can also be used to
- A** admire musicians attire.
 - B** communicate messages to people.
 - C** display used musical instruments.
 - D** show how good smoking is.
- 19** Appropriate dress in practical activities is important to
- A** be admired by others.
 - B** look smart while working.
 - C** protect yourself from injury.
 - D** show that you can work.
- 20** A sprint race is started by the following steps.
- A** Go, set, on your marks.
 - B** Go, on your marks, set.
 - C** On your marks, set, go.
 - D** Set, go, on your marks.

SECTION B: HOME ECONOMICS

- 21** Identify the kitchen equipment shown below:



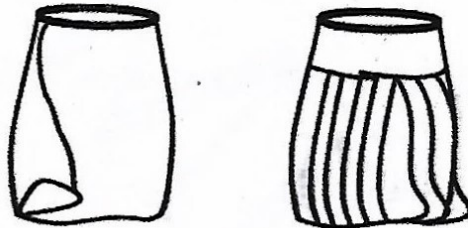
- A** Electric blender
- B** Electric kettle
- C** Electric saucepan
- D** Electric teapot

22. Identify one physical change in boys at puberty.
- A The hips become enlarged and widened.
 - B The voice breaks and deepens.
 - C The breasts enlarge.
 - D They produce milk.
23. What is **one** reason for cooking food?
- A For admiring of beauty
 - B Look more
 - C Kill germs
 - D Remove dirt
24. Give an example of a raising agent you can use to make a Swiss roll.
- A Baking powder
 - B Bicarbonate of soda
 - C Egg white
 - D Yeast
25. What is described as the feeling of personal worth, liking oneself?
- A Good dressing
 - B Good grooming
 - C Physical appearance
 - D Self respect
26. Non-verbal communication involves the following **except** ...
- A dressing.
 - B e-mail.
 - C space.
 - D tone of voice.
27. Poor ventilation results in ...
- A short supply of clean air.
 - B pneumonia and tuberculosis.
 - C excess supply of clean air.
 - D colds and coughs.
28. Mangoes, avocados, pears and bananas are good for making ... salads.
- A cabbage
 - B fruit
 - C potato
 - D vegetable

- 29** Explain what food budgeting is.
- A** A plan of how food is bought from the market.
 - B** A plan of how food is shared in the home.
 - C** A plan of how you spend your money on food.
 - D** A plan of how you want to eat your food.

- 30** How do we care for our feet?
- A** Apply Vaseline every morning.
 - B** Put on socks all the time.
 - C** Wear correct size of shoes.
 - D** Scrub feet before wearing shoes.

- 31** Two types of designs on skirts are shown below. The methods of arranging fullness can be seen in the diagrams. These are ... and



- A** darts and fastness.
- B** darts and pleats.
- C** mending clothes.
- D** patch and hem.

- 32** Explain the first general rule of dyeing a fabric.
- A** Add salt to the material before dyeing.
 - B** Boil the dye together with the material.
 - C** Coil both ends of the material.
 - D** Wet the material before dyeing.

- 33** The method of adding chlorine to drinking water helps in ... water borne diseases.
- A** preventing
 - B** promoting
 - C** protecting
 - D** spreading

- 34 Which of the following has the correct combination of leftover food and leftover dishes?

	Leftover food	Leftover dishes
A	Bread	Puddings and pies
B	Chicken	Soups and fritters
C	Nshima	Sandwiches and munkoyo drink
D	Rice	Puddings and fritters

- 35 Which of the opening mentioned below can be used on a skirt?

- A Zip opening
- B Slit opening
- C Faced opening
- D Bound opening

- 36 What is the use of maize straws in craft work?

- A Produce a dye for colouring.
- B Stuffing the items made.
- C To plait mealie meal sacks.
- D To plait reed mats.

- 37 Which item can be used in place of a winnower/winnowing basket to remove unwanted particles from food?

- A Colander
- B Saucepan
- C Strainer
- D Tray

- 38 Below is a column of changes in boys and girls at puberty stage. Which column has a correct match?

	BOYS	GIRLS
A	Have pimples	Legs grow tall
B	Hips get big	Breasts grow big
C	Shoulders not broaden	Do not have pimples
D	Voice deepens	Breasts grow big

- 39 Mrs Mwanza sales groceries in her shop. Which of the following must she do to know whether she is making profit or loss?
- A Be nice to customers.
 - B Buy more groceries which do not sale.
 - C Give extras to customers each time they buy.
 - D Record all her items and sales for each day.
- 40 Look at the diagram below;



This item is made by ...

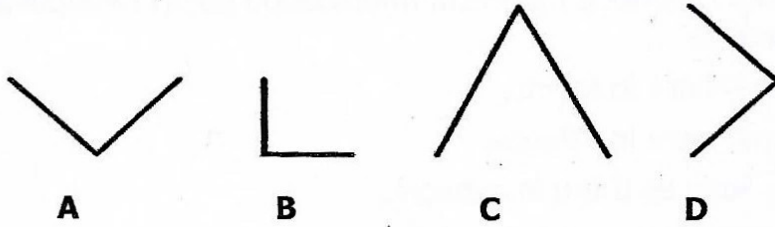
- A carving and knitting.
- B embroidery and crocheting.
- C plaiting and weaving.
- D tie and dying.

SECTION C: TECHNOLOGY STUDIES

- 41 Which **one** of the following helps us to connect a pressing iron to an electricity source in our homes?
- A Bulb
 - B Bulb holder
 - C Meter box
 - D Socket outlet
- 42 Which **one** of the following on the computers helps us to navigate windows?
- A Cursor
 - B Internet
 - C Mouse
 - D Taskbar
- 43 How do solar panels get the electrical energy? They ...
- A are exposed to the soil.
 - B are exposed to cold weather.
 - C get the energy from the sun.
 - D get the energy from water.

- 44 How has a cellphone made communication easier? People are able to communicate ...
- A anywhere in towns.
 - B anywhere in villages.
 - C as long as there is network.
 - D easily with expensive phones.
- 45 Why is it better to use iron roofing sheets than grass when roofing a house? Roofing sheets ...
- A are cheaper.
 - B easily worn out.
 - C lasts longer.
 - D smell good.
- 46 When preparing land for construction, setting is done in order to...
- A clear the land.
 - B harden the land
 - C mark the foundation.
 - D soften the ground.
- 47 Which of the following is **not** a risk associated with the use of the internet?
- A Destroyed reputation
 - B Difficult to hide identity
 - C Exposure to immorality
 - D Easy business contacts
- 48 Machona was adding the cost of items he was buying using a calculator which ran out of power. Which other tool could be used to complete the addition quickly?
- A Brick game
 - B Cell phone
 - C Digital watch
 - D Mechanical watch
- 49 Mulenga wanted to make a simple electric circuit, he needed dry cells, a bulb, copper wire and a ...
- A generator.
 - B meter box.
 - C socket.
 - D switch.

- 50 Which of the following parts when put together will produce a kite?



- A** A and C
B A and D
C B and D
D C and A
- 51 Katiti used ... to download different softwares.
A internet websites
B Microsoft excel
C Microsoft office
D windows movie maker
- 52 A student was typing a composition for her assignment. The title of the composition was supposed to be ...
A at the end of the composition.
B deleted after typing.
C written in capital letters and underlined.
D written in small letters and not underlined.
- 53 To print words, a Grade 5 pupil used an alphabet stencil and ...
A markers.
B paper.
C pencil.
D pen.
- 54 Mubita burnt the clay bricks after muddling them. He did this to ...
A harden the bricks.
B make the bricks look attractive.
C make the clay bricks look dark.
D soften the clay bricks.
- 55 A carpenter was preparing wood to make a table. The wood was supposed to be ... first.
A cut
B measured
C planed
D smoothed

- 56 A student was going to work in the workshop and was to observe three of the following rules **except** ...
- A wear loose clothes.
 - B wear protective goggles.
 - C do not play with the machines.
 - D do not smoke cigarettes.
- 57 To do lettering print, one should ...
- A click the lettering icon.
 - B pick the print icon.
 - C select the format.
 - D use words only to print text.
- 58 What is the difference between a tape measure and a steel rule?
- A A tape measure is soft while a steel rule is hard.
 - B A tape measure lasts longer than a steel rule.
 - C A steel rule gives better measurements than a tape measure.
 - D A steel rule is used in metalwork while a tape measure is used in tailoring.
- 59 When information is typed and kept in a computer, it can be retrieved by ...
- A changing windows.
 - B closing the file.
 - C deleting the information.
 - D double clicking on the file.
- 60 A carpenter spent K130.00 to make a table. At what price can he sell it to get a reasonable profit?
- A K200.00
 - B K130.00
 - C K300.00
 - D K120.00

STOP! PLEASE GO BACK AND CHECK YOUR WORK.